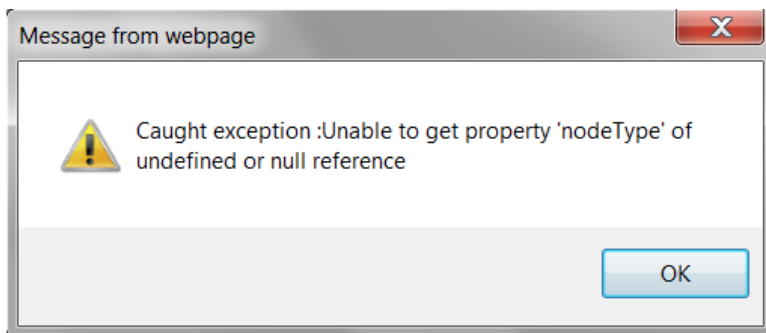


Microsoft Internet Explorer 10 and Web Services Compatibility

This is a known issue between Microsoft Internet Explorer 10 and certain web services.

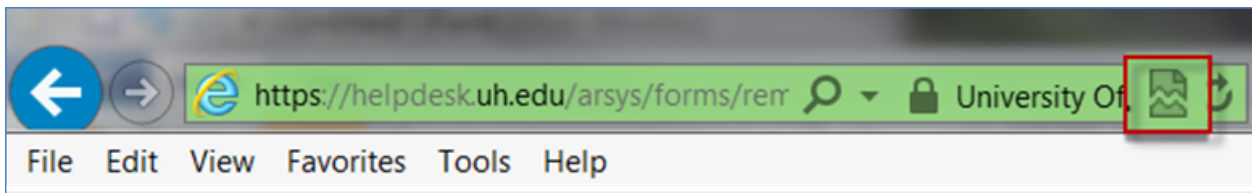
Services Affected: Computer Account Management (CAM), UIT Case Management, TSM Web Submission Tool, and Live Chat

Error for Computer Account Management (CAM), UIT Case Management, TSM Web Submission Tool:



Solution for Computer Account Management (CAM), UIT Case Management, TSM Web Submission Tool:

To have the webpage appear properly, click on the "Compatibility View" button located at the top of the browser, in the Address Bar.



Error for Live Chat:

A blank screen may appear.

Solution for Live Chat:

To have the page appear properly, click on the "Compatibility View" button located at the top of the browser, in the Address Bar.

