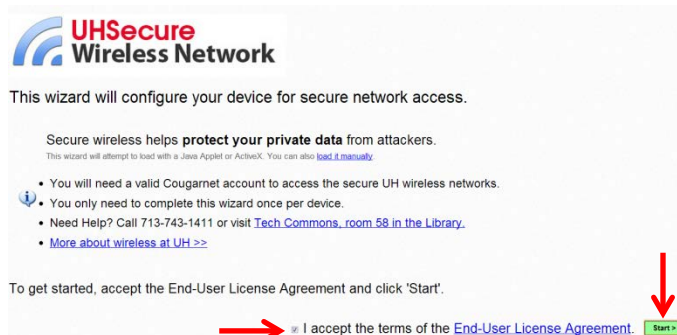


Configure UHSecure for WiFi Laptops

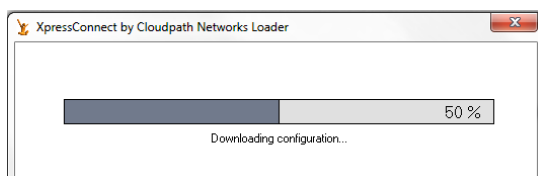
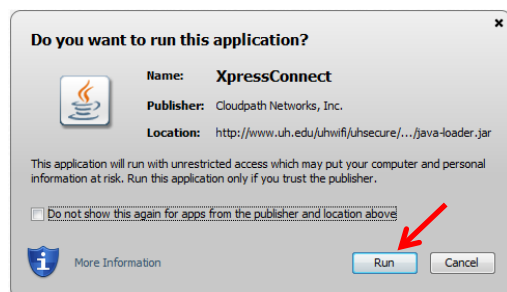
Updated: December 10, 2013

How to connect a wireless device to UHSecure

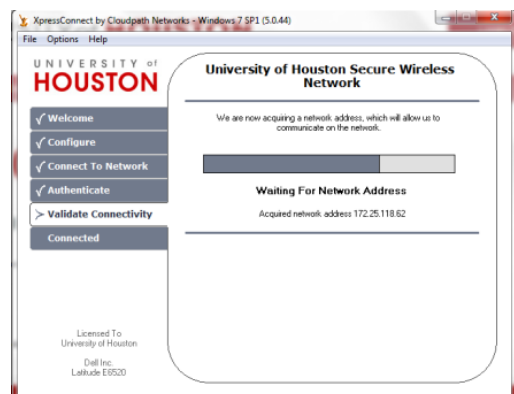
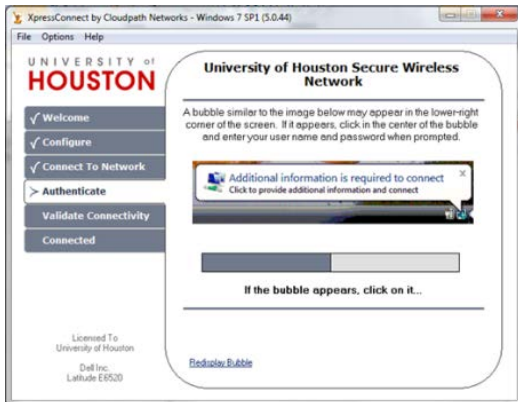
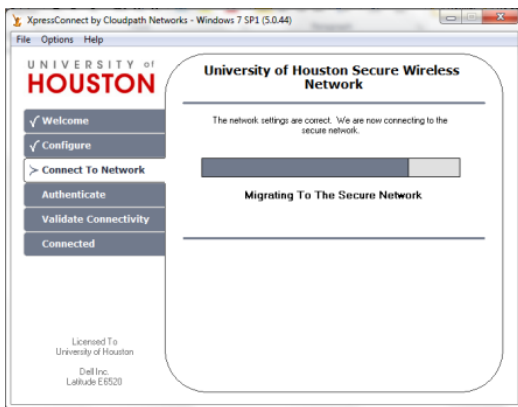
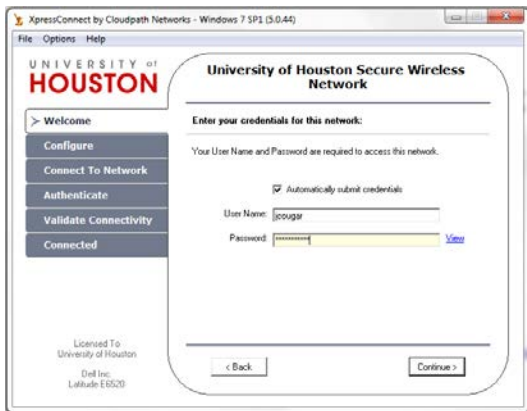
1. Go to www.uh.edu/uhsecure.
2. Check **"I accept the terms of the End-User License Agreement."**
3. Click **Start**.



4. Click **Run**.



5. Enter **CougarNet ID** and **CougarNet Password**.
6. Click **Connect**.



7. Click **Done**.

